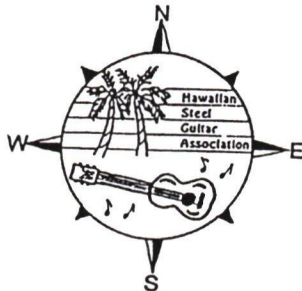


# HSGA QUARTERLY

Published four times a year in Honolulu, Hawai'i  
by The Hawaiian Steel Guitar Association

Volume 12, Issue 44

FALL 1996



## OFFICERS IN HAWAI'I

Alan L. Akaka, President  
Jerry Byrd, Vice President  
Edward Punua, Secretary-Treasurer

## BOARD OF DIRECTORS

Bernie Endaya, California  
John Marsden, England  
Lorene Ruymar, Canada  
Mike Scott, Canada  
Doug Smith, Ohio  
Don Weber, Illinois

## JAPAN COORDINATOR

Akitomo "Tom" Ikehata

## STATEMENT OF PURPOSE

Hawaiian Steel Guitar Association is registered as a non-profit organization in the State of Hawai'i, and as a social organization under IRS tax code 501(c)(7). Its purpose is to develop a global communications network of players and lovers of Hawaiian traditional music as performed on all types of steel guitars and related instruments.

## MEMBERSHIP

Open to all steel guitar players and non-players around the world who support the promotion and perpetuation of Hawaiian steel guitar music. Annual dues are US\$24. Membership year begins July 1. Members receive HSGA Quarterly, and other group benefits.

## MAILING INFORMATION

Mail all correspondence and articles to: HSGA, P.O. Box 1497, Kailua, HI 96734-1497, USA  
Phone/Fax: (808) 235-4742  
HSGA QUARTERLY is mailed to Members by U.S. Bulk Permit to USA addresses; by "Printed Matter" surface to all non-USA addresses. Outside Hawai'i, allow 4-6 weeks delivery. For airmail, send: \$2.00 yr., USA/ \$6 yr., all other countries."

## NEW DIRECTORS ELECTED AT JOLIET MEMBERSHIP MEETING



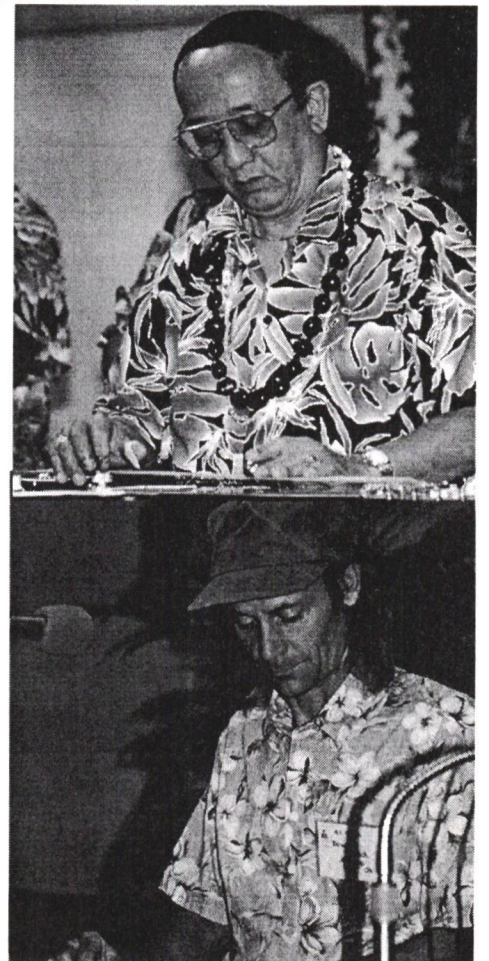
(L TO R) Mike Scott, Don Weber, Ed Punua, Alan Akaka, Lorene Ruymar, and below, Bernie Endaya and Doug Smith (concentrating on their steel playing). Jerry Byrd in Honolulu and John Marsden in England stayed home...after all, someone has to "stand watch" on the frontiers!

HSGA Officers and Directors for the two-year period, July 1, 1996 through June 30, 1998 were elected at the annual General Membership meeting held in September, during the Joliet Convention.

We welcome new Directors Bernie Endaya of Glendale, California, Mike "Malihini" Scott of Toronto, Canada, and Doug Smith of Medway, Ohio. Don Weber of Joliet, Illinois, appointed last year to fill out Frank Miller's term and take over Chairmanship of the Joliet convention, was duly elected to a full term.

Re-elected to a second term were Officers Alan L. Akaka, President; Jerry Byrd, Vice President; and Edward Punua, Secretary-Treasurer, and Directors John Marsden and Lorene Ruymar. HSGA member Tom Ikehata of Tokyo, Japan was welcomed as Japan Coordinator of membership and HSGA activities.

The new Board of Directors held its first meeting in Joliet, and decisions made at that meeting will be published in the Winter HSGA Quarterly.





# BUILD YOUR OWN DOBRO

By Rudolf Barten

with Prologue and Questions from  
Art and Lorene Ruymar

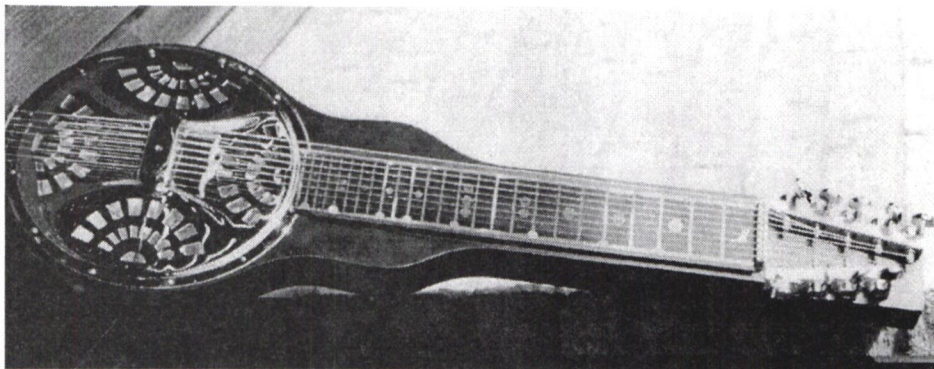
## PROLOGUE

Here's a wintertime project for you who like to build things. It was submitted by Rudolf Barten of Cologne, Germany, who is a bit of a genius in solving problems. He has built his own Dobro and fitted it with an electric pickup, but he has been able to retain the peerless acoustic sound. Before you hear from Rudolf, it would be wise to explain the pickup he is using.

The pickup is called the "Highlander", available through that company at 306 Glenwood Av., Ventura, CA 93003 (805-658-1819/Fax 805-658-6828). Highlander specializes in pickups for acoustic instruments. Their stock includes a Model IP-1 which resembles the Barcus Berry pickup (the kind Rudolf is working with) and another pickup built for installation on a biscuit bridge such as you find in the National resonophonic guitars. To quote from their brochure "...for use in steel string or nylon string acoustic guitars and basses ... a unique under-the-saddle coaxial transducer ... ideal for any string spacing. The pickup is connected to a true Class A audiophile preamplifier that is housed in a metal tube and mounted on the end pin jack, the strap holder. This preamp's level of ultra-low noise, feedback resistance, and distortion has to 'not' be heard to be believed..."

**After having built his own Dobro-like instrument, Rudolf explains to you how he installed the Highlander:**

**RB:** We all know how easy it is to connect a Hawaiian steel guitar to an amplifier, but it's much more difficult with a Dobro. There are problems with the distance from the microphone, problems with feedback, and problems on the stage as well. But there is an easy way, though not too low-priced. I tried it, and I have a new, clean, excellent sound. It is far from the electric tone, closer to the typical nasal sound of the Dobro, but much more natural and as loud as you'd want.



Buy a Piezzo pickup, the one with the flexible end part. Change the wooden bridge and make a new double one, as shown in the drawing, as thick as possible to fit into the grooves of the spider bridge. Choose a hardwood (as hard as possible) for that purpose. File the top of the spider bridge screw down as deeply as possible in order that the top part of your new bridge still has support between the two tracks (grooves) in the aluminum bridge which, for this purpose, are a little too low. Insert the flexible end of the Piezzo between the lower and upper parts of the new bridge, put the strings on, plug in to battery or AC, connect with the amplifier and play — you'll be surprised!

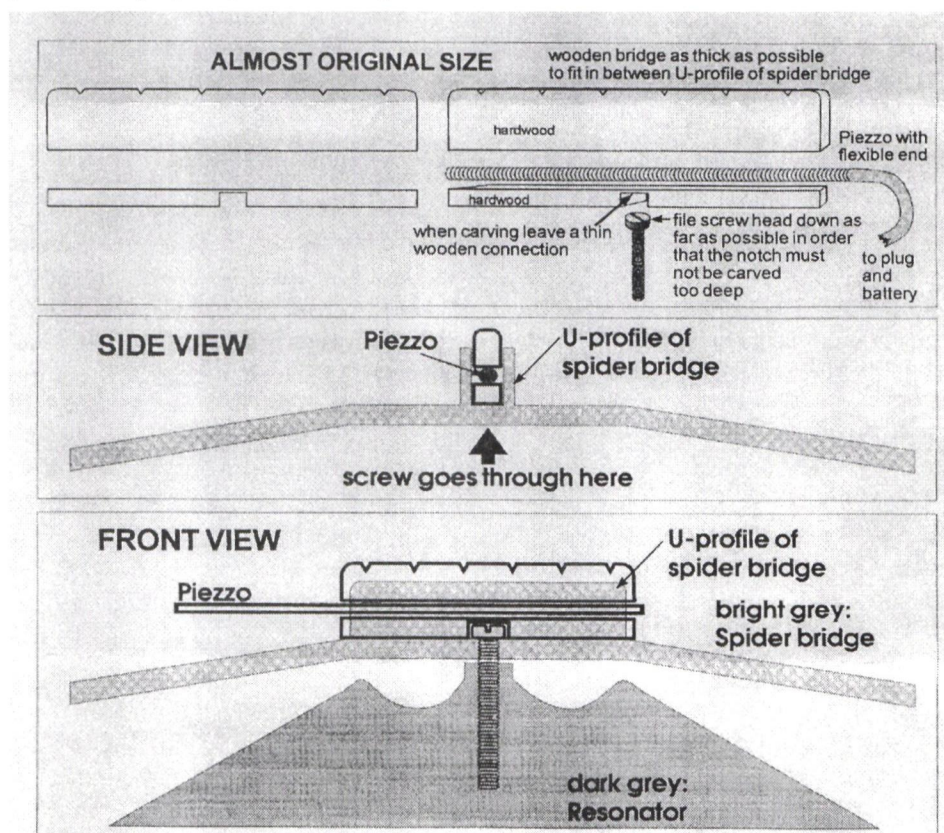
I bought the Piezzo in Germany for \$250, but it should be much cheaper bought in the U.S.

**LR:** Rudolf, we're not 100% clear on just where the Piezzo would go.

**RB:** I mean that the wooden bridge supporting the strings should exactly fit into the U-profile track of the aluminum spider bridge.

**LR:** On the bridge that supports the strings, where you say "hardwood as thick as possible", what is a reasonable maximum of thickness?

**RB:** Depends on the width of the U-profile in the spider bridge, where the wooden bridge fits into it, about 0.14 inches? Should be measured.





**LR:** I see that the bridge is in two parts with the Piezzo pickup between them like a sandwich. Should either of the two bridge parts be rounded out a bit to allow for the Piezzo pickup?

**RB:** Not necessarily. Perhaps only the upper one could be shaped, if you have the skill to do it.

**LR:** We're not sure where the screw fits into the picture. Is that little piece cut out of the lower bridge to allow for the screw head?

**RB:** Normally with your Dobro (with wooden bridge inserts separated in two parts, left and right) you can reach the screw from outside, even when the strings are in place. Since that is not possible in this case, you have to fix the screw BEFORE the lower part of the wooden bridge is placed into the U-profile of the spider bridge.

**LR:** If the lower piece of the bridge is NOT making place for the screw head, why is it notched?

**RB:** The screw head sticks up higher than the bottom part of the U-profile. Therefore, a notch has to be carved into the lower part of the wooden bridge to fit the screw head, but without destroying the upper surface of that bridge. A thin wooden section must remain above the screw head to help support the pickup at this location.

**LR:** What is holding the two pieces of the bridge and the pickup together? Is it just pressure of the strings or does the screw go through both parts of the wood, passing through beside the pickup and then into the body of the Dobro?

**RB:** Pressure of the strings is holding the three parts together: the upper part, the pickup, and the lower part.

**LR:** We wrote the Highlander company and received their brochure. HSGA members will be happy to learn that the prices are lower in the U.S., and the people at Highlander are very obliging, happy to customize their product (if possible) to suit your requirements.

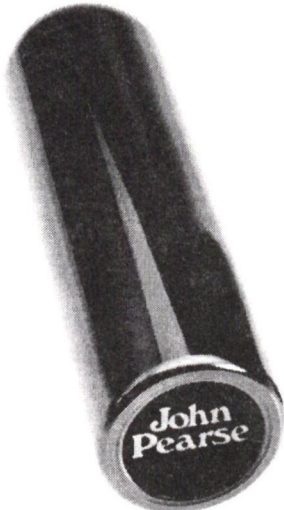
**EDITOR'S EPILOGUE:** Rudy calls his creation a "Rubro" because of its individual shape and technique. He sent along a recording, which he does in his own digitized studio, to demonstrate the sound. Thanks eh! Rudy - bitte, reisen mit ihre "Rubro" nach Honolulu in Mai 1997. Veilicht man zu sehen und spielen der "Rubro", und selbst aug. In other words, bring um to convention and play um!



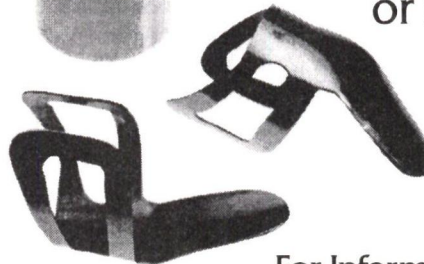
**DA BOOK IS HERE!** "The Hawaiian Steel Guitar and its Great Hawaiian Musicians." Lorene sold out in Joliet. "It's a beautiful book and Lorene has done a thorough research job," says Alan Akaka. "It's a Hasegawa General Store of steel guitar — history, artists' biographies, lot of pictures, different brands, styles and types, tunings, techniques - very interesting reading." Jerry Byrd wrote the Foreward, and we're proud the book is sponsored by HSGA. 200 pages, 9"x12". \$29.95+ \$3 surface mail/\$5 airmail in U.S. Check or money order ONLY, payable to "Lorene Ruymar": In Canada use - 2090 West 44th Av., Vancouver BC V6M 2E9; U.S. and all other countries, P.O. Box 28337, Bellingham, WA 98228-0337, USA.

We're Not **JUST**  **Any**more!

**John Pearse**<sup>®</sup>  
Thermo-Cryonic<sup>™</sup>  
Tone Bars for  
Pedal Steel and  
Hawaiian Guitar



**John Pearse**<sup>®</sup>  
**HI-RIDER**<sup>™</sup>  
Finger Picks  
that won't "OUCH"  
or fall off!



For Information call  
BREEZY RIDGE INSTRUMENTS, LTD.  
Center Valley, PA 18034-0295  
800/235-3302 or 610/691-3302



## MEMBER'S CORNER

*Elmer Ridenhour, Salem, VA. - (We like to "make nice" on da kine from time to time; thank you Elmer, for doing it for us.)* "Alan - I was greatly pleased and impressed with the skill and leadership you displayed in May at the musical events for steel guitar ... also your super picking, especially 12th Street Rag - quite an accomplishment. I was impressed too, with **Ed Punua's** playing and singing. I predict a brilliant, successful future for him if he continues in the right direction."

*Aub. Hewston, New South Wales, Australia -* "Am still enjoying the video tapes of the '95 convention. I am amazed at the talent of the steel players — also the backing group. Each has their own style of playing which I think is great. The different tunings that can be played is very interesting and have a great sound. Am looking forward to the '97 convention (Honolulu) to see and talk to these talented men, but most of all to meet Alan and Jerry." **(HSGA "players": Aub. is seeking backing tapes to play steel with at functions, as he has no group of his own. Can you help him? Contact: Aub Hewston, 32 Oxford St., Gateshead, NSW 2290, Australia.)**

*Steve Sherman, San Francisco, CA -* "I am so pleased to be a member and know there are so many fans (-atics!) out there. Even in the "dry haole heartland" of the USA. I feel like part of a big family. I am so enthused about HSGA, I think the SF Bay Area needs a kick in the butt re: Hawaiian and steel music offerings." *(See Steve's tale in Coco Wire of an evening listening to HSGAr Bobby Black at a Berkeley club.)*

*Andrew Volk, Arlington, MA -* "The HSGA Quarterly looks better with every issue. Alan, please keep up the monthly installments on technique — especially discussions on blocking and harmonics techniques. I really enjoy reading every issue. Lately I'm also enjoying a 1952 triple-neck Fender custom I've just acquired. It came with a wonderful hand-painted, original Fender case with "Lewie Thompson" on one side, and "Swingin' Troubadours on the

other. Does anyone know anything about Lewie or this group?" Andy's at



35 Ronald Rd., Arlington, MA 02174-1421.

*George "Keoki" Lake, Edmonton, AB, Canada -* "I'm still slugging away on steel amongst many other activities. We have put together a very impressive Polynesian Group under the direction of Toutai Pasi. The Pasi ohana is still very much involved in the Polynesian Cultural Centre where Toutai gained much of his entertainment skills. He and his family moved to Edmonton 2 years ago and wasted little time rounding up potential dancers and a musical crew. He found me through word of mouth, and we struck up a great friendship.

"We call our group 'Cane Fire', and now have 4 lovely ladies who dance all the routines of Polynesia ... also a fire dancer, 2 male dancers and rhythm guitar/vocals, bass/vocals, drummer/vocals, and me on steel. We recently booked two large conventions which came off very well.

"The Oil Well Drillers wanted something really impressive for their 400 delegates so they built a 'volcano' on stage, palm trees, etal. My steel started the show with an octave gliss, then WHAM! All hell broke loose as the volcano exploded with a mighty roar. The flames shot upward toward the very high ceiling and the wiring of the stage lights above me caught fire. Everyone

looked upwards instead of at the dancers. We never missed a beat through all the commotion. After a mad scramble for tall ladders, the flames were doused and the show went on. Not

THAT'S a grande entrance if ever there was one!" *(It's not nice to fool with Madame Pele, George.)*

"Also, I have just completed my first term teaching adults steel guitar. It's been 40 years since I've taught, but Senior's Rec. Centre asked me, and the students are very keen to learn. After some 20 lessons, they wanted to play a concert. I was really proud of their performance. My daughter is in the class and coming along very well. She's in the extreme right of the picture." *(To paraphrase a current TV commercial slogan "Hawaiian music is everywhere you want to be". We'd like to hear from other HSGA members who are playing Hawaiian in far off places.)*

*Bud Tutmarc, Seattle, WA - (in a July letter between trips!)* "I am leaving for Greece next Wednesday, July 24, and have been invited to play at a church in Thessaloniki. I don't think many Hawaiian steel guitars have been played there. Last year and the year before, I play my steel on a boat on the Sea of Galilee and in the Garden of Gethsemane. That ought to be another 'first'". *(And a lovelier sound than a drum, Bud. How 'bout Russia, next? Could use some "sweetening".)*

*Masahiro Ujiie, Ichikawa City, Japan -* "I have enjoyed every HSGA Quarterly issue. Let's me know all about the



HSGA's activities. Articles are very interesting, and most of the photos explanations are humorous. (*Yes, Ujii-san, HSGA members have FUN when they play together.*) Hawaiian music seemed to start booming in Japan this year, along with hula. The show business companies in Japan are planning to invite more musicians and dancers from Hawai'i, and even local small pub restaurants also are planning more Hawaiian shows than before. The first boom came soon after the end of WW2, in early '50s, and we enthusiasts expect this current trend to become the second boom. As you know, Japan is still under the deep economical depression and no sign of recovery today. We hope for this (*Hawaiian music*) trend to be the specific medicine for the depression." (*As an HSGA steel player friend says "I'm only an ocean away and ready to play!" Greg Sardinha spent the summer taking Japanese language lessons — guess why! And Bobby Ingano and Martin Pahinui are just waiting to be invited back. They all rave about what wonderful hosts you in Japan are for Hawai'i's musicians.*)

## Buy \$ Sell

**WANTED CONTINUOUSLY:** by Michael Cord, Cord International - "Lap steel guitars, old amplifiers, 78 rpm Hawaiian records." CALL (California) (805) 648-7881; FAX (805) 648-3855. Michael says "if you want some cash, please ask."

**WANTED:** An old bakelite steel bar. If you have one for sale, call Andy Volk. He's interested.

**FOR SALE - COLLECTORS ITEMS:** from J.T. Gallagher, with a percentage going to Jerry Byrd's Scholarship Fund; prices inc. s&h.: (1) The Rickenbacher 1954 Revised 1960 Jerry Byrd Instruction Course for the steel guitar. Mint condition books. \$30.

**FOR TRADE: Vintage 1920's Hilo Hawaiian Steel Guitar.** Koa Square neck acoustic. Style 625. S/N 559. Trade for Vintage Flat-Top or Fender Electric. Contact William Busalacchi at (206) 243-6247, or 1912 SW 167th St., Seattle, WA 98166-2756.

(2) Charles E. King's "Book of Hawaiian Melodies", \$60 (*folks, these are, rare, long out-of-print, and even hard to find in Hawai'i!*). Also and AUTOGRAPHED copy of "King's Book of Hawaiian Melodies", best offer.

**WANTED BY HSGA OFFICE FOR YOUR USE - YOUR E-MAIL ADDRESS.** We're going to make up an E-Mail address list for members, as it's been requested by you Web surfers. Please send E-MAIL ADDRESS by regular mail with your name VERY CLEARLY handwritten on a postcard, or best (to eliminate errors) TYPED. Soon as we have every HSGA member who is on the Internet, we'll publish the list. By December 1 latest, if you want us to get this into Winter '96 Quarterly.

(3) Johnny Noble's "Royal Collection of Hawaiian Songs", some autographed by Johnny Pineapple, \$60.

(4) Johnny Noble's "Collection of Ancient & Modern Hulas" (1935), \$50. (5) Add \$5 for mint condition lead sheets of Johnny Pineapple's "It Happened in Honolulu" and "Along the Pineapple Trail".

### THE FINEST VINTAGE & CONTEMPORARY HAWAIIAN MUSIC

ORIGINAL RECORDINGS  
1930'S TO 1990'S  
OF HAWAII'S FINEST RECORDING ARTISTS  
AVAILABLE ON CD & CASSETTE

ALFRED APAKA  
GABBY PAHINUI  
THE KALIMA BROTHERS  
JERRY BYRD  
RICHARD KAUHI  
ANDY CUMMINGS  
GENOA KEAWE  
GEORGE ARCHER  
JOHN K. ALMEIDA  
GEORGE KAINAPAU  
HALELOKE  
GEORGE HELM  
& MANY, MANY MORE

SEND FOR OUR FREE CATALOG WITH  
SPECIAL DISCOUNTS FOR  
H.S.G.A. MEMBERS & FRIENDS

 Cord International

P. O. BOX 152 • VENTURA, CA 93001  
805-648-7881

ALL HAVE UNDERGONE EXTENSIVE COMPUTER AUDIO RESTORATION

## MYRIAH'S BAZAAR



Hawaiian, Tahitian, Maori, & more

**Complete Source for  
Polynesian Enthusiasts**

Vintage Hawaiian Movies - Implements  
Music Books - Steel Guitar Cassettes  
Costumes - Instructional Materials  
Music & Dance Videos - Books - etc.

for complete catalog send \$2.00 to:

**Myriah's Bazaar, Dept. HS  
10700 East Walnut Drive  
Centralia, MO 65240 - U.S.A.  
573-682-5520 Fax: 573-682-5035**

(6) Oahu Series: PT 1-80; PN 1-70; B Series; EZ Series. Contact J.T. for price.

You can write to: Makalina Gallagher, 590 16th St., Brooklyn, NY 11218. However, because of the rarity of some of these items, we recommend E-MAIL to: maka@chelsea.ios.com, or CALL (718) 768-6182. US\$ Checks or money orders made out to: Makalina Gallagher.

**FOR SALE: 1993 Remington "Steelmaster" double-8.** George-L PF1 pickups, 22 1/2" scale, white with black fretboards, 14/1 gear ration tuners, 4 telescoping legs and hard-shell CushCase. Guitar & case are both in excellent condition. \$950 (plus UPS shipping). Andy Volk wants calls to (617) 572-6588 between 8:30 am - 5:00 p.m., Eastern time. OR Andy's E-mail address is avolk@jhancock.com. Also has 1948 edition of "King's Hawaiian Melodies" in excellent condition. \$50 with 50% to Jerry's scholarship fund.



# STEEL GUITAR FILLS THE AIR IN PAPAKOLEA

by Wayne Shishido

One May 4, 1996, the Kona members of the Hawaiian Steel Guitar Association presented a steel guitar concert in Papakolea. The neighborhood, which sits in the shadow of Punchbowl Crater in Honolulu, enjoyed the talents of our musicians and their friends. “Prince” **John Auna** coordinated with the entertainers and the Papakolea Community Association to put on the show.

Some of our HSGA members, in town for the May Day celebration, heard about the concert and took city buses to get there. Their efforts were rewarded with performances by **Auntie Genoa Keawe**, **Hula Hālau ‘O Hoakalei**, and steel guitar by **Bernie Endaya**, **Richard Lloyd**, **Kamaka Tom**, **Bob Mekani**, **Rodney Freedman**, **Al Greene, Jr.**, **Alan Akaka**, **John Auna**, **Bobby Ingano**, **Herbert Hanawahine** and **Wayne Shishido**. The day began with Bernie playing “Hula Blues” and wound up four hours later with Auntie Genoa singing her trademark tune, “Alika”.

Often times, the backup musicians are not given credit for their contributions. “Emperor” Bernie Endaya did exceptional work on bass, as did Kamaka Tom on bass and ‘ukulele, and “Prince” John and Wayne Shishido on guitar.

Bernie and Richard came from California, and Bob came in from Florida to join in on the fun. When John Auna puts on a concert, he pulls out all the stops. Hula Hālau ‘O Hoakalei showed their talent by performing several audience favorites. The great thing about concerts such as this is that you can see many different styles of playing the steel in a single venue. The informal neighborhood setting lent itself to impromptu hulas by the audience.

On a sad note, Uncle Buddy Hew Len, who was scheduled to perform, was unable to join in the festivities for health reasons. Here’s wishing him our best.

Auntie Genoa, at age seventy-eight, is proof that music keeps you young. She really looks like she’s having fun out there. Accompanied by sons Eric and **Gary Aiko**, Herbert Hanawahine



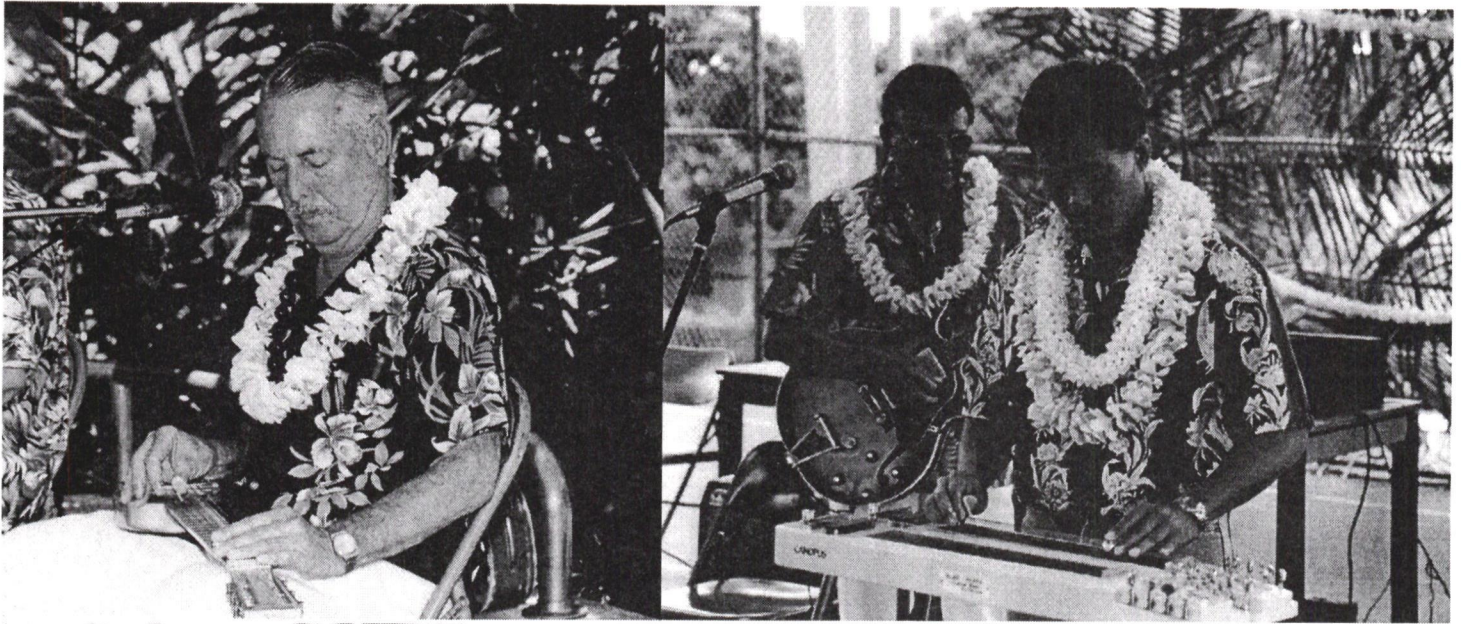
*Hula Hālau ‘O Hoakalei dances*



*(Above) Dick Lloyd came from California to play, and (Below) John Auna (left) adds some guitar licks to a duet by Auntie Genoa Keawe and son Gary Aiko.*







*Bob Mekani (left) on vacation from Florida, gave a fine steel performance at Papakolea, as did Kamaka Tom (below), and (right) John once again does backup duty for Da Pres.*

## ...AND AT WARD WAREHOUSE SHOPPING CENTER

Kamaka Tom, who arranges our HSGA member gigs in Honolulu added the amphitheater stage at Ward Warehouse to our May Festival playing sites, where the Lei Day Festival and contest is held each year, on May Day.

Among the steel players were Wayne Shishido (pictured right, and below), John Auna, Kamaka Tom, Al Greene, Jr., Bernie Endaya, Bobby Ingano, and Alan Akaka.

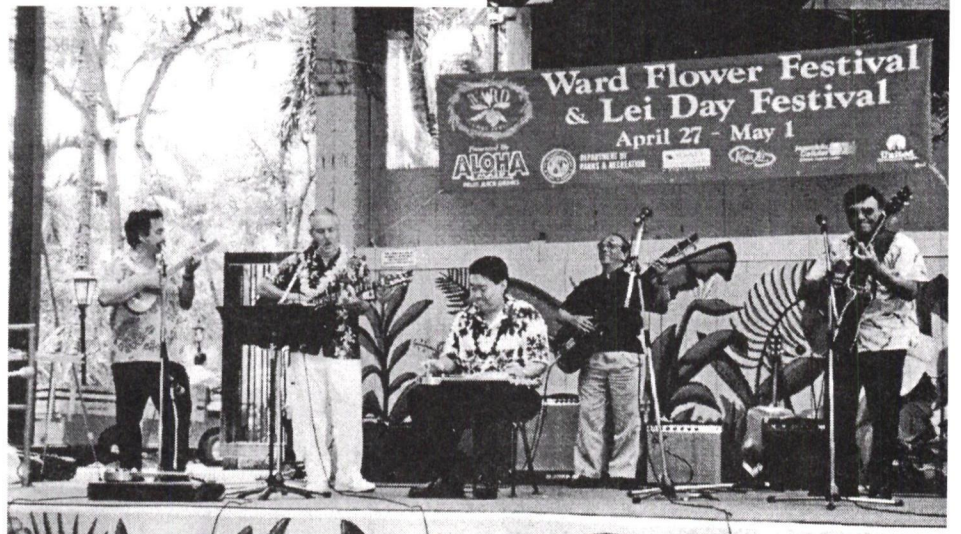
We drew quite a crowd, as always, and hope to be asked back next May Day, during HSGA's Honolulu convention.



*PAPAKOLEA continued*

and John Auna, she captivated the audience with her smile and wonderful voice. Gary and Eric shone on their solo numbers, and Herbert lent his impeccable touch on the steel to complement Auntie Genoa's singing. As an entertainment tip for visitors to the Islands, Genoa Keawe plays Thursdays at the Hawaiian Regent lobby bar, from 5:30-8:30 p.m. (*Alan Akaka in on steel*). Auntie Genoa is truly one of Hawai'i's living treasures.

At the conclusion of the concert, the only question the musicians had was "when can we do this again?" (*Alan Akaka says "probably next May"*).

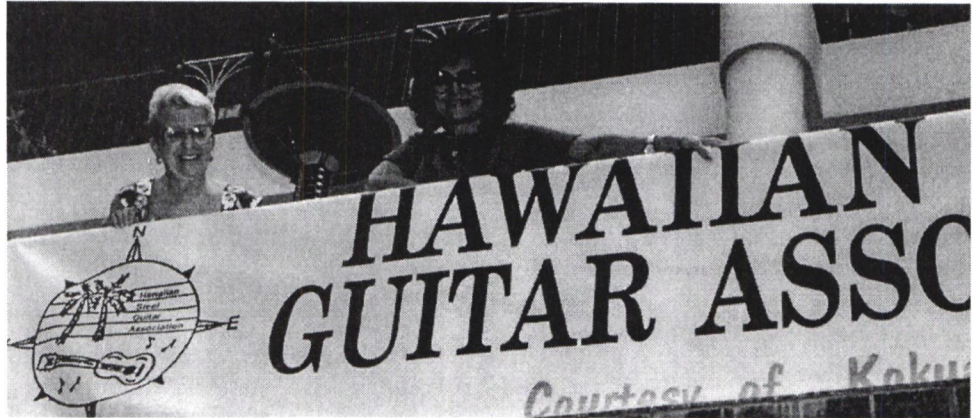
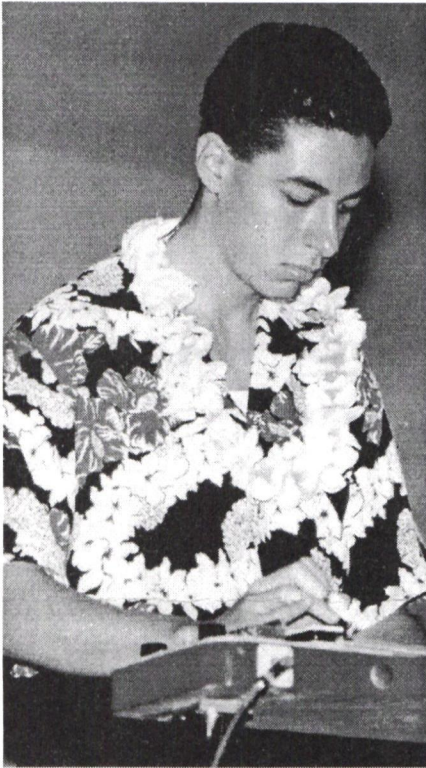




# STEEL GUITAR AT PLAY

## A Photo Story Review

All this good music and fun happened between May 1-15, 1996. How come they weren't printed in your Summer Quarterly? We were short of time, space, some of the photos, and Wayne Shishido's article. If you're thinking about coming to the Honolulu convention in May '97, here's a preview of the kind of steel guitar events and fun you can look forward to.



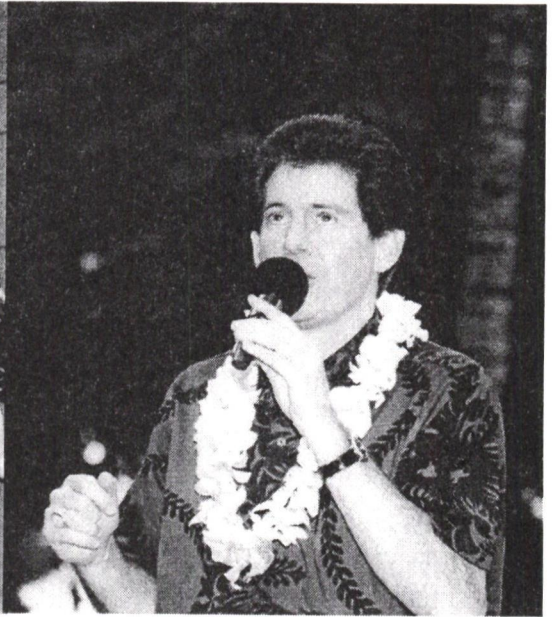
*Page 10, Top to Bottom: Your Editor and Margaret Kamahele hang the HSGA banner on the balcony above Ala Moana Center's "Center Stage". Young Al Greene, Jr. gets plenty of practice at our concerts and also played, for the first time on stage at the Ho'olaule'a. Hanalei deWilligen steels a trick or two on Bobby Ingano and "Lion" Kobayashi while Alan and Mariko Seki wait their turn to jam. Mariko's student also played for us.*

*Page 11, Top to Bottom: Royal Hawaiian Shopping Center in Waikiki comes alive as Alan, Hanalei and Dick Sanft jam a few tunes, with Benny Kalama and Sonny Kamahele on 'ukulele and guitar, and Gary Aiko on bass. And who else can emcee for this annual KCCN Hawaiian radio event? Harry B. "Territorial Airwaves" Soria, Jr., of course. Mariko Seki has become a regular at all our Honolulu concerts, and is a joy to listen to. Comes sunset, and Frank and Donna Miller are joined by Bob Pulevai Waters, who congratulates Greg Sardinha for his gig at the Sheraton Waikiki. Down the beach, Cookie Isaacs and Hanalei deWilligen enjoy "The Islanders" steel music at the Halekūlani "House Without A Key"*





# IN HAWAI'I NEI





## MEMBERSHIP APPLICATION

REFERRED BY: \_\_\_\_\_

NAME \_\_\_\_\_

ADDRESS \_\_\_\_\_

CITY \_\_\_\_\_

STATE/PROVINCE \_\_\_\_\_

ZIP/COUNTRY CODE \_\_\_\_\_

PHONE (\_\_\_\_) \_\_\_\_\_

FAX (\_\_\_\_) \_\_\_\_\_

Enclosed is:  check,  cash,  
 money order/US\$

ANNUAL DUES (US\$24)

"Quarterly" AIRMAIL (Foreign-US\$6yr.)

"Quarterly" AIRMAIL (U.S.-US\$2yr.)

ASSOCIATE MEMBER (US\$10)

Name \_\_\_\_\_

DONATION:  Scholarship  
 General Fund

BACK ISSUES (US\$3 ea): Circle Choice(s) below

Spring Summer Fall Winter of 199\_\_\_\_\_

Spring Summer Fall Winter of 199\_\_\_\_\_

TOTAL ENCLOSED: \$ \_\_\_\_\_

### MEMBER PROFILE (to better serve you)

I play non-pedal steel  I play pedal steel  
 I don't play steel

Other instruments I play: \_\_\_\_\_

I am a:  Professional musician

Amateur  Novice

I don't play an instrument, but sure  
love to listen

I travel to Hawai'i:  Every year

Occasionally  Seldom

Never been there!

My age group is:  under 20  20-39

40-59  60-over

**NEW MEMBERS WILL RECEIVE THE  
LATEST "QUARTERLY" WITH THEIR  
MEMBERSHIP CARD.**

Address all mail to:

HSGA

P.O. Box 1497

Kailua, HI 96734-1497

Phone/Fax (808) 235-4742

# SO YOU WANT TO PLAY STEEL GUITAR HAWAIIAN STYLE

## THE QUARTERLY INTERVIEWS ALAN AKAKA

### PART V - FORWARD AND REVERSE SLANT EXERCISES



In the four lessons I covered the straight bar, forward and reverse slants. Nuff said. Now it's time to put the theory into practice. On the next page is a set of exercises that should keep you busy for awhile, until the Winter issue. The following two pages are a special arrangement of "Evening In the Islands" by the "Master of Touch & Tone" Jerry Byrd. I'm sure you'll enjoy playing this arrangement over the next few months and help you perfect your playing technique.

I will have one more combination slants exercise in the Winter issue with another special arrangement for you. Good luck, "**Practice, Practice, Practice**" and have fun!



STRAIGHT BAR



FORWARD SLANT



REVERSE SLANT

### JOLIET '96 CONVENTION VIDEOS FROM CLAY SAVAGE.

**6939 Kingston Court, Port Richey, FL 34668; (813) 863-0804.** Each video, inc. postage is: US\$15, U.S. & Canada; US\$17, Europe; US\$19 Pacific Rim (Japan, Malaysia, Australia, New Zealand, etc.)

### SEPTEMBER '96

Tape #1: Duke Ching & Bob Waters, Dale Nightwine, Neal Cosand, Art Ruymar, Lorene Ruymar

#2: Phil Bender, Art Ruymar, Ron Simpson, Raymond Clay, Tom Ikehata

#3: Duke Ching, **Ed Punua**, Doris Atkinson, Al Weatherhead, Coral Islanders

#4: Teresa Scott, Mike Scott, Frank & Donna Miller, Ken McClary, Mae & Art Lang

#5: Lorene Ruymar, Michael Beaks, Jack Campbell, Maurice Junod, **Alan Akaka/Ed Punua**

#6: **Alan Akaka/Ed Punua**, Ralph Fortney, Kay Koster, Phil Bender, Dick Lloyd

#7: Billy Reid, Kenneth "Dusty" Noll, Don Woods, Warren Slavin, Ian Ufton

#8: Neal Cosand, Sharon Denney, Jack Moore, Ray Gaitsch, Tom Ikehata, **Alan Akaka**

#9: **Lū'au Music: Alan Akaka, Ed Punua**, Duke Ching, Bob & Julie Waters, Virginia Grzadzinski, Ian Ufton



# REVERSE SLANT PRACTICE E Tuning

*Rev.*

8 - - -	<i>Rev.</i> 8 - - -	8 - - -	<i>Rev.</i> 8 - - -
4/4 8	9	8	9
C7	F	C7	F

5 - - -	<i>Rev.</i> 9 - - -	12 - - -	<i>Rev.</i> 12 - - -
4/4 5	8	12	13
A	A	E7	A

*Rev.*

9 - - -	<i>Rev.</i> 12 - - -	4-5-7	5 - - -
4/4 8	13	3 5-6	5
A	A	E7	A

*Rev.*

5-9	<i>Rev.</i> 12 - - -	12 - - -	12 - - -
5	13	11	12
	A	A <sup>+</sup>	E7

*Rev.*

12 - - -	<i>Rev.</i> 10 - 9	12 - - -	4 - - -
3/4 13	10 8	12	3
A	A	E7	E7

14 - - -	<i>Rev.</i> 12 - 11	<i>Rev.</i> 12 - - -	(R-1)
13	12 12	13	
Bm	E7 - A <sup>b</sup>	A	A



# EVENING IN THE ISLANDS <sup>II</sup> EMAJOR or (2) E7th. Tuning

4/4

12 13 13 9 9 8 5

F C#7 F

(R-3)

10 13 10 9 13 13

F F C7 - C+ - F

8 8 8 8 9 9 9 9 8 5

C7 F C#7 F

(R-3)

5 8 5 3 5 1

F F C7 F

(R-3)

1 6 6 9 9 8 5

F7 B<sup>b</sup> B<sup>b</sup>m F

(R-3) [ Palm Harmonics ]

6 6 13 9 8

F B<sup>b</sup>m B<sup>b</sup>m C7



# "EVENING IN THE ISLANDS"

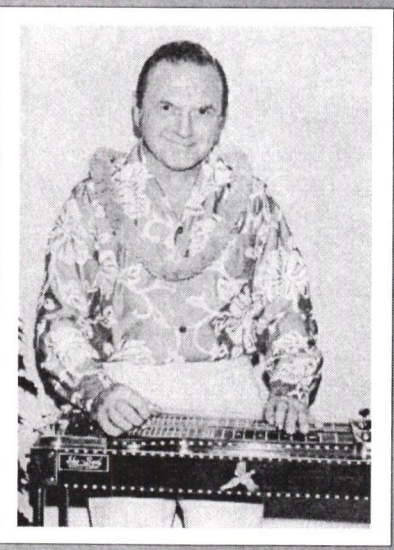
(2.)

Handwritten musical notation on a five-line staff. The notes are: 9, 13, 13, 13, 13, 13, 9, 9, 9, 9, 9, 9, 9, 9, 9, 9. Chords indicated below the staff are C+, F, and C7.

Handwritten musical notation on a five-line staff. The notes are: 8, 5, (R-3), 10, 13, 10, 9, 13, 9, 5, 4. Chords indicated below the staff are F, F, F, and C7.

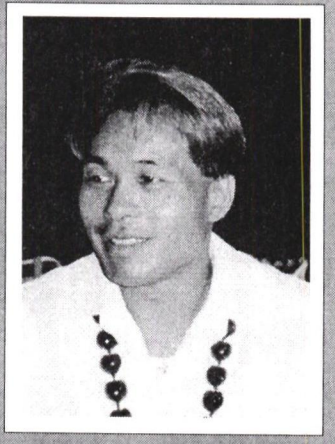
Handwritten musical notation on a five-line staff, divided into two sections labeled 1) and 2). Section 1) notes: 1, 1, 1, 8, 10, 11, 12, 8, 9, 11, 12. Section 2) notes: 1, 1, 1. Chords indicated below the staff are F, C7 - - E, and F.

Handwritten musical notation on a five-line staff. The notes are: 3, 5, 6, 9, 8, 1, 13, 2, 4, 6, 10, 9, 1, 13, 13. Chords indicated below the staff are Gm - - F#, F, and F. The word "Ritard" is written above the first measure.



We say mahalo ā nui loa to good 'ole JB for giving us permission to reprint this arrangement of "Evening In the Islands" and the Reverse Slant exercise. I learned to play steel from these exercises in the 1970s.

*Stan L. Skake*







Worldwide

# Hawaiian Adventure Radio

TM

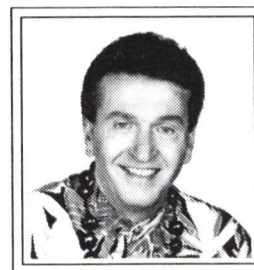
## The Cable Radio Network

Saturday 7 - 9 am Pacific Time

Radio Broadcast On Cable TV!

If your cable system is listed, tune to that channel. Screen will display program listings, local announcements or a blue screen.

We're the AUDIO on THAT channel



with  
Aloha JOE

### NOW WORLDWIDE ON AUDIONET

AVAILABLE TO INTERNET USERS AROUND-THE-WORLD

<http://www.audionet.com>

Click to: The Cable Radio Network  
in the Adult Contemporary or Radio Stations Menu

#### Alabama\*

#### Alaska\*

#### Arizona

Cable America - 6,50  
Insight Comm. - 6  
Post Newsweek - 2

#### Arkansas

United Video Cable - 3,9

#### California

Avenue TV Cable - 6,63  
BuenaVision - 6  
Cable Co-op - 16  
Cablevision Industries - 3,17(sap)29,36  
Calavision - 3,10  
Century - 3,6,8,16,17,20,28,50,52,58,68,74  
Charter - 3,12,14(sap),55,56,62  
Comcast - 3,19,22,53,57,68  
Continental Cablevision-1,3,21,29,31,44,65,66,69  
Cox Comm. - 3,15(sap),24(sap),30,31,33,37,39,62,76  
Daniels - 38  
Falcon Cable TV - 6,12,15,45,59,60,61  
Jones Intercable - 21  
Liberty - 3,57  
Marcus Cable - 6,6(sap),58,97  
Mountain - 6  
Multivision - 3,6,8,11,45  
Northland Comm. - 6  
Paragon - 3,6(sap),22,38,57,59,61  
Sonic - 6,21  
Southwestern - 2,3,4(sap),5,15,16,48,49  
TCI - 3,14(sap),23,25,32,33  
Time Warner Cable - 5,9,11,18,19  
Viacom - 25

#### Colorado

Breckenridge Cable - 3

#### Connecticut\*

**Features:**  
Hawaiian Music  
(Vintage & Modern)  
Island News - Travel Tips & Bargains  
Celebrity Interviews  
Talent Showcase - Contests  
The HOT Hawaiian "Top 10"

**SAP**  
Second Audio Program  
Use SAP switch on TV

**\*Satellite Access**  
SATCOM-C3  
113 Degrees West  
Transponder - F3/23  
Audio - 7.235



Hawaiian Adventure Radio Productions  
PO Box 2140 Culver City, CA 90231  
1-800-808-1005

#### Delaware\*

#### District of Columbia\*

#### Florida

CV Cable (Warner) - 14

#### Georgia

Tele-Communications - 1

#### Hawaii

Kauai Cable - 28

#### Idaho

Century Comm. - 11

#### Illinois

Continental - 7  
Gridley Cable - 12  
SBC Cable - 8

#### Indiana\*

#### Iowa

Midwest Cablevision - 4

#### Kansas\*

#### Kentucky

TKR Cable - 5

#### Louisiana\*

#### Maine\*

#### Maryland\*

#### Massachusetts

Cablevision - 11,37B

#### Michigan\*

#### Minnesota

Northland Cable - 13  
Midwest Cablevision - 11

#### Mississippi\*

#### Missouri

United Video Cable - 3

#### Montana

TCI - 11

#### Nebraska\*

#### Nevada (Las Vegas)

Imperial Palace Hotel - 18

#### New Hampshire\*

#### New Jersey\*

#### New Mexico

Taos - 106.5 fm  
Las Vegas - 105.1 fm

#### New York

Cablevision Industries - 8,12

Continental - 43

Herron Cable - 8

#### North Carolina

Northland Comm. - 5

Telemidia - 10

#### North Dakota\*

#### Ohio

Cox Comm. - 2

#### Oklahoma\*

#### Oregon

Falcon - 3  
Paragon - 47  
TCI - 2,3,5,9,31,47

#### Pennsylvania

Suburban - 25

#### Rhode Island

Cox Comm. - 28

#### South Carolina

Intermedia Cable - 3

#### Tennessee\*

#### Texas

Paragon - 15  
W.C. Cablevision - 8,47,48

#### Utah

Utah Cable - 28

TCI - 6,9

#### Vermont

Helicon - 2,7,38

#### Virginia

Media General - 11,24,27,51

Time Warner - 9

#### Washington

Century - 11  
Columbia Cable - 35  
Summit - 23,52,62

TCI - 3

#### West Virginia\*

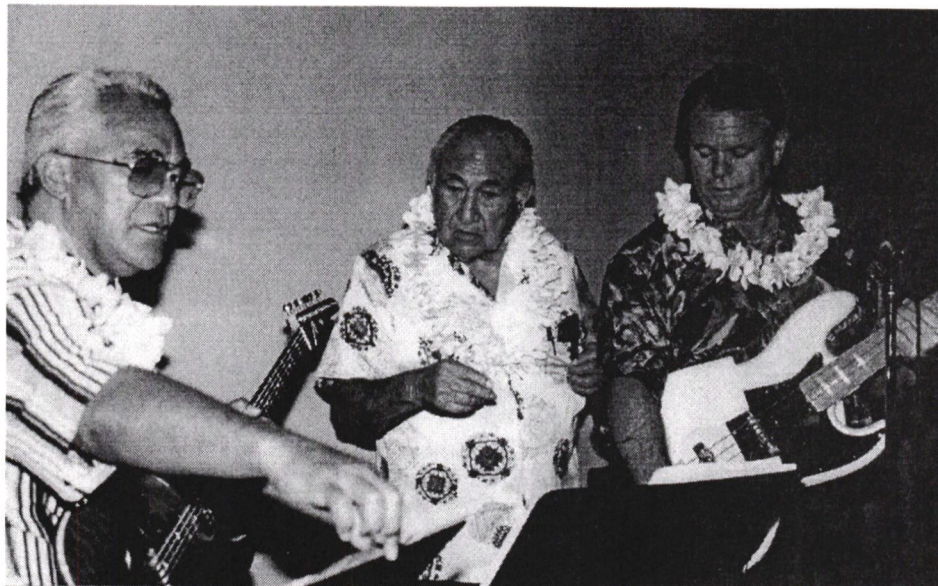
#### Wisconsin

Midwest Cablevision - 10

#### Wyoming\*

#### Canada\*





Pictured, from the top, Hiram Olsen points out a key change to Benny Kalama and Kalani Fernandes; Jerry threatens to sell his steel in case IT makes a mistake (NOT!); Hanalei and Lilly deWilligen and a friend always come early for front and center seats (usual crowd is 500 to 600); Casey Olsen surprised us with "Moonlight in Vermont" and "Winter Wonderland", and playing in the final jam session were (l to r) Mariko Seki, Herbert Hanawahine (without his cap), Casey Olsen, Bobby Ingano (seated), Alan Akaka, Jerry Byrd, "Lion" Kobayashi and Greg Sardinha. *Photos courtesy of Paul Weaver.*

## 6th Annual International All-Star Hawaiian Steel Guitar HO'OLAULE'A





KEEP THIS PORTION BELOW FOR YOUR RECORDS  
**HAWAIIAN MUSIC & HSGA CONVENTION**  
**ACTIVITIES, MAY 1 THRU MAY 17, 1997**

- Thursday, May 1      Lei Day - ALL day, from 10 a.m. Kamaka Tom is making arrangements for our show.
- Friday, May 2        Convention Registration desk open, 9 am-12 Noon Queen Kapiolani lobby.
- Saturday, May 3      ALA MOANA S. C./ CENTER COURT - Alan Akaka and steel guitar concerts . FREE  
Probably early afternoon
- SUNDAY, MAY 4      **\*\*HAWAIIAN STEEL GUITAR HO'OLAULE'A, \*\***. See Winter Quarterly for details.
- Wednesday, May 5    1-2 p.m. KCCN "Territorial Airwaves" Live at Royal Hawaiian Shopping  
Center. STEEL GUITAR FEATURED w/Alan Akaka & other HSGArS.
- MAY 5, 6, 7          HSGA MUSIC SESSIONS, AKALA ROOM, QUEEN KAPIOLANI HOTEL.  
Check with Lorene Ruymar at Convention Desk for schedule.
- Thursday, May 8      Free day. Spend Sunset at Halekulani "House without a Key", 5:00 - 8:30 pm  
or Auntie Genoa Keawe & her group, with Alan Akaka at the Regent Hotel lobby bar.
- Friday, May 9        A day trip to Moloka'i is presently being considered. More in Winter Quarterly.
- Friday, May 9        6-7 p.m. KCCN LIVE at Royal Hawaiian Shopping Center featuring Auntie  
Genoa Keawe, with Alan Akaka on steel.
- May 10 thru 17        Plans underway to play at Polynesian Cultural Center and other Oahu sites. More in the  
Winter Quarterly.

\*\*\*MORE HSGA STEEL CONCERTS WILL BE LISTED IN WINTER QUARTERLY\*\*\*

*ports of paradise*



**THE TOPICAL TROPICAL MUSICAL POSTCARD FROM HAWAII** est 1960

**SOUVENIR HISTORIC STEEL SHOWS**

*Ports of Paradise's* "History of Steel Guitar" series is available ONLY to fellow HSGA members. Two special one-hour programs on two cassettes include 18 All-Time Greats of steel, with introductions by Alan Akaka. Artists include King Benny Nawahi, Jules Ah See, Jim & Bob, Sol Ho'opi'i, David Keli'i, Pua Almeida, Jerry Byrd, Roy Smeck, Alan Akaka, plus vocal selections by some of Hawaii's best. NOT FOR SALE! Send \$9 for shipping and handling. Stereo tape cassette, only.

**WIN JERRY BYRD'S NEWEST CD**

Exclusively from *Ports of Paradise*, by special arrangement with The Mountain Apple Company, win "*Jerry Byrd...By Request.*" His new release features many of your steel guitar favorites. To enter our drawing for this collector CD, name two of the three "inventors" of the Hawaiian steel guitar. Send on a postcard only, with your name and mailing address to the address below. [No obligation to enter].

**WE'RE FREE**

No "off channel" TV cable connection needed to enjoy all the best from the islands! Drop us a card for a list of stations in your area.

*ports of paradise*

**COVERS ONE-THIRD OF THE GLOBE**

From New York City to Anchorage to Florida to Seattle to San Diego...and now the Western Pacific Ocean area (Guam, Saipan, Palau, Mariana Islands, American Samoa,) listeners are enjoying every moment of island music. Soon to be added: The Philippines and Japan.

**CHECK OUT P.O.P. ON THE INTERNET**

Look for us at <http://www.portparadise.com>.

Check the latest music releases in our catalog, trip info and related items of interest. You can get our catalog by sending \$2 [credited to first \$15 order] to the address below. Hundreds of music selections...and if you don't see what you want...we'll find it for you.

**MAKE MONEY FROM YOUR RECORD COLLECTION**

If you have old Hawaiian 78s, 45's or LP's of any vintage in playable condition, they could be worth money to you. We'd like to know about them for future show use or possible re-recording. Contact us immediately, and we'll talk price.

◆◆◆ We're proud members of the HSGA. ◆◆◆

**P.O. Box 33648 San Diego, CA 92163 e-mail: [aloharn@portparadise.com](mailto:aloharn@portparadise.com)**



# H.S.G.A. 1997 HONOLULU HOTEL REGISTRATION

QUEEN KAPI'OLANI HOTEL, 150 KAPAHULU AV., HONOLULU, HI 96815

MUST BE MAILED OR FAXED BEFORE MARCH 26, 1997 to:

JANICE, CENTRAL RESERVATIONS, THE CASTLE GROUP  
1150 SO. KING ST., HONOLULU HI 96814 •

Toll Free 1-800-367-5004 (U.S. & CAN); 1-808-591-2235/Ext. 3014 (HAWAII) • FAX 808-533-0472

Name (PRINT) \_\_\_\_\_ # IN PARTY \_\_\_\_\_

Home Address \_\_\_\_\_

City \_\_\_\_\_ State/Prov./Country \_\_\_\_\_ Zip/Postal code \_\_\_\_\_

ARRIVAL DATE/TIME (after 3 p.m.) \_\_\_\_\_

DEPARTURE DATE (before 12 Noon) \_\_\_\_\_

**\*\*HSGA'S ROOM RATES ARE GOOD FROM APRIL 25 TO MAY 19, 1997\*\***

**ACCOMMODATION NEEDED: \*Write in choice: TW for "Twin Beds" or DBL for "Double Bed"**

STANDARD:	Price per Day	* Beds? # Persons	Price per day	* Beds?
1/2 persons	\$61 + 10.17% tx.	_____	3 persons	\$76 + 10.17% tx _____
4 persons	\$91 + 10.17% tx.	_____	<b>W/KITCHENETTES:</b> Starting at \$84 + 10.17% tx _____	

ONE DAY'S DEPOSIT ENCLOSED TO HOLD RESERVATION\*  Check/M.O. for \$\_\_\_\_\_ herewith.

CREDIT CARD  Visa  MC  Amex  Diner's Club /# \_\_\_\_\_ - \_\_\_\_\_ - \_\_\_\_\_ - \_\_\_\_\_ EXPIRES \_\_\_\_\_

Name on card \_\_\_\_\_ Signature of Cardholder \_\_\_\_\_

----- CUT HERE AND MAIL FORM **ABOVE** TO THE CASTLE GROUP AT ABOVE ADDRESS -----  
MAIL FORM BELOW TO HSGA

## 1997 HONOLULU CONVENTION REGISTRATION

MAY 5 THROUGH MAY 7, 1997 • QUEEN KAPI'OLANI HOTEL

**NOTE:** Your HSGA dues must be paid to participate

FIRST & LAST NAMES OF ATTENDEES \_\_\_\_\_

MAILING ADDRESS \_\_\_\_\_

CITY \_\_\_\_\_ STATE/PROV/COUNTRY \_\_\_\_\_ ZIP/POSTAL CODE \_\_\_\_\_

Enclosed: **Advance Registration\*** of \$\_\_\_\_\_ (**\$65 PER PERSON**).  I will pay **LATE (\$75)** fee on arrival.

\*CHECK OR MONEY ORDER ONLY. REG. FEE INCLUDES LUNCH IN "AKALA ROOM", MAY 5,6,7, AND IS PART OF HSGA'S "AKALA ROOM" RENTAL PACKAGE VOUCHERS FOR 3 LUNCHES WILL BE ISSUED TO YOU AT HSGA CONVENTION REG. DESK ON FRIDAY, MAY 2, 9AM-NOON. There is NO fee reduction if you eat lunch elsewhere.

**PERFORMANCES:**  I plan to perform.  I will play back-up for others, on  Guitar,  'Ukulele,  Bass,  
 Other (state) \_\_\_\_\_  I need to play at following time and day \_\_\_\_\_

**Performers: plan 20 minutes on stage; bring 2 sets of chord charts for back-up players.**  
Amps and mics will be provided on stage, but NOT available from hotel for private jam sessions

**PLEASE answer following, so we know where to find you!**

I am registering at Queen Kapi'olani Hotel  I am staying at following hotel/home \_\_\_\_\_

PHONE (if other than Queen Kapi'olani) \_\_\_\_\_ Are you coming to MOLOKAI?  Yes  No



## ***E KOMO MAI! Welcome! New Members***

THE 1996-97 MEMBERSHIP LIST IS AVAILABLE NOW. Send \$1.50 s/h to receive list. Paid back orders are now being filled.

ALTON L. BARZEE, 87 Brookside Dr., Springville, UT 84663-2371  
MIKE BEDDOES, 35-2137 W. First Av., Vancouver BC, V6U 1E7, CAN  
w/d D.M. BERGE. Immolbilalaan 3B. Wn. Rotterdam 3079, Netherlands  
GREG BORRELLI, 309 E. Blithedale Av., Mill Valley, CA 94941  
DAVID & BARBARA BROWN, 19750 Benson Ln, Ft. Bragg, CA 95437  
WM. H. DAVIS, 73-4335 Wanae Pl., Kailua-Kona, HI 96740  
BARBARA L. FLYNN, 3901 Tower Dr., Richton Park, IL 60471  
DONALD R. FULLMER, 1911 Court St., Richmond, VA 23228-5208  
HUGH GRAY, 2300 Woodhouse Rd, Victoria BC V8R 2M7, CAN  
JOHN HEYWOOD, 40 Ringwood Close, Furnace Gr., Crawley,  
W. Sussex RH10 6HH, England

E.L. HYLTON, 3210 Wallace Av., Bronx, NY 10467  
RONALD K. KANAHELE, P.O. Box 461, Aiea, HI 96701  
OCEAN KAOWILI, 86-289 Hōkūpa'a St., Wai'anae, HI 96792  
KELI'I J. LAU, 94-1089 Hina St., Studio, Waipahu, HI 96797  
MARK LOWERRE, 2409 Harriman Ln #B, Redondo Beach, CA 90218  
HAROLD MAKIN, 3437 8th St., Lewiston, ID 83501  
HANK MANN, 3415 McLaughlin Av. #105, W. Los Angeles, CA 90066  
DOROTHY MAWAE, 560 28th, Longview, WA 98632  
CHARLES MERTELY, P.O. Box 38, Montello, WI 53949  
LUVERNE MURAWSKY, 4428 S. 65th St., Greenfield, WI 53220  
ROBERT H. OEHMLER, 12402 Connecticut Av., Wheaton, MD 20906  
PERCY M. PORTER, 8060 22nd Av. NW, Seattle, WA 98117  
TERESA SCOTT, 587 Wellington St. W, Toronto, ON M5V 1G3, CAN

*(continued on page 4)*

### **THE LAST WORD**

*Marjorie J. Scott, Editor*

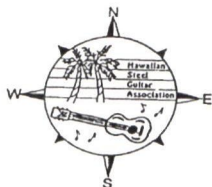
HSGA has "doers" like Lorene Ruymar who still answers every steel guitar letter sent to her, or refers it to Alan for response. Hank Sims, sends out a friendly "Hi — let's correspond" letter to every new member listed in the Quarterly. Doug Lomax started the New Zealand Hawaiian Steel Guitar Association, Vic and Nancy Rittenband promote HSGA all over Hawai'i and the world. Then there are so many of you who tell us you gift your playing at seniors' homes and events, hospitals and churches, and many others who touch the lives of those around them with their steel guitar music.

I've added the category "ground breakers" for nine HSGArs who, over the past year, stepped beyond their love for Hawaiian steel guitar: they joined the Hawaiian Music Hall of Fame and Museum to support the perpetuation of our unique music culture. Joe Boudreau, Pam Anderson (R. Alex Anderson's daughter) John Deboe, Brian and Shirley Litman, Harry B. Soria Jr., and Genl. Fred Weyand. Bob and Betty Bahret, in Hawai'i for a holiday, joined at the First Annual Hall of Fame concert in February, and helped us achieve the goal of this Benefit with additional support. *Mahalo nui loa.*

## **HSGA QUARTERLY**

**The Hawaiian Steel Guitar Association  
P.O. Box 1497, Kailua, HI 96734-1497**

FORWARDING AND RETURN  
POSTAGE GUARANTEED  
ADDRESS CORRECTION REQUESTED



DONALD WEBER  
205 WILLIAM ST  
NEW LENOX IL 60451-1934

Bulk Rate  
U.S. Postage  
PAID  
Honolulu, HI  
PERMIT #9129

## **FALL 1996**

*Featured in this issue:*

- **HONOLULU CONVENTION & HOTEL REGISTRATION FORMS**
- **FOTO GALLERY: STEEL AT PLAY IN HAWAI'I NEI**
- **PART IV: "So You Want To Play Steel Guitar"**
- **BUILD YOUR OWN DOBRO - Rudy Barten**

X 6/97